

ChyTV.net Setup Instructions

November 4, 2010

Note: For convenience this document references direct links to various downloads. All downloads can be found at:

<http://www.chytv.com/software/>

Note: The ChyTV.net servers have recently been relocated. At the time of this writing, Chyron has not yet linked the DNS URL www.chytv.net to the new location. Therefore this document will reference the ChyTV.net URL's via the direct IP address of the new location: <http://167.206.202.156>. The 167.206.202.156 address should be used instead of the previous 64.94.177.36 address in all cases and applications.

At some time in the future www.chytv.net will point to this location.

ChyTV.net Overview

ChyTV.net is a Web based content management and delivery interface that enables you to host your content on a central server. This is an alternate content delivery method than the traditional ChyTV Tools method. ChyTV Tools can be thought of as a 'push' method since it enables you to connect directly to the device(s) and push the content to it. It is directly interactive and generally more appropriate for local area network (LAN) deployment. ChyTV.net can be thought of as a 'pull' method in which the device reach out at regular intervals to the ChyTV.net server and 'pull' the content down. ChyTV.net devices can obtain a dynamic address and will easily collect the content through a firewall, much like a Web browser. This easy installation and setup is generally more appropriate for wide area network (WAN) deployments in which larger numbers of devices are located in different remote locations.

The ChyTV.net interface consists of a secure login account with the ability to define 'groups' of devices and assign 'projects' to the groups. A group consists of some number of ChyTV devices that should all receive the same (or similar) project. A project is collection of pages, schedule, data and graphic assets that are to be displayed on a playout device. A project is authored using the standard ChyTV Tools and ChyTV Author (or PowerPoint) applications. Then, rather than being 'pushed' directly to the device, the project is 'Uploaded' to the appropriate ChyTV.net account. The project, as well as any other previously uploaded projects, are then available to be assigned to any group. After assignment, any devices that are members of that group will then collect the new content on their next check-in interval.

Installing ChyTV.net on the ChyTV Device

For SD Devices (ChyTV Plus, ChyTV-IP)

Step 1: Loading the CF card with the ChyTV.net OS.

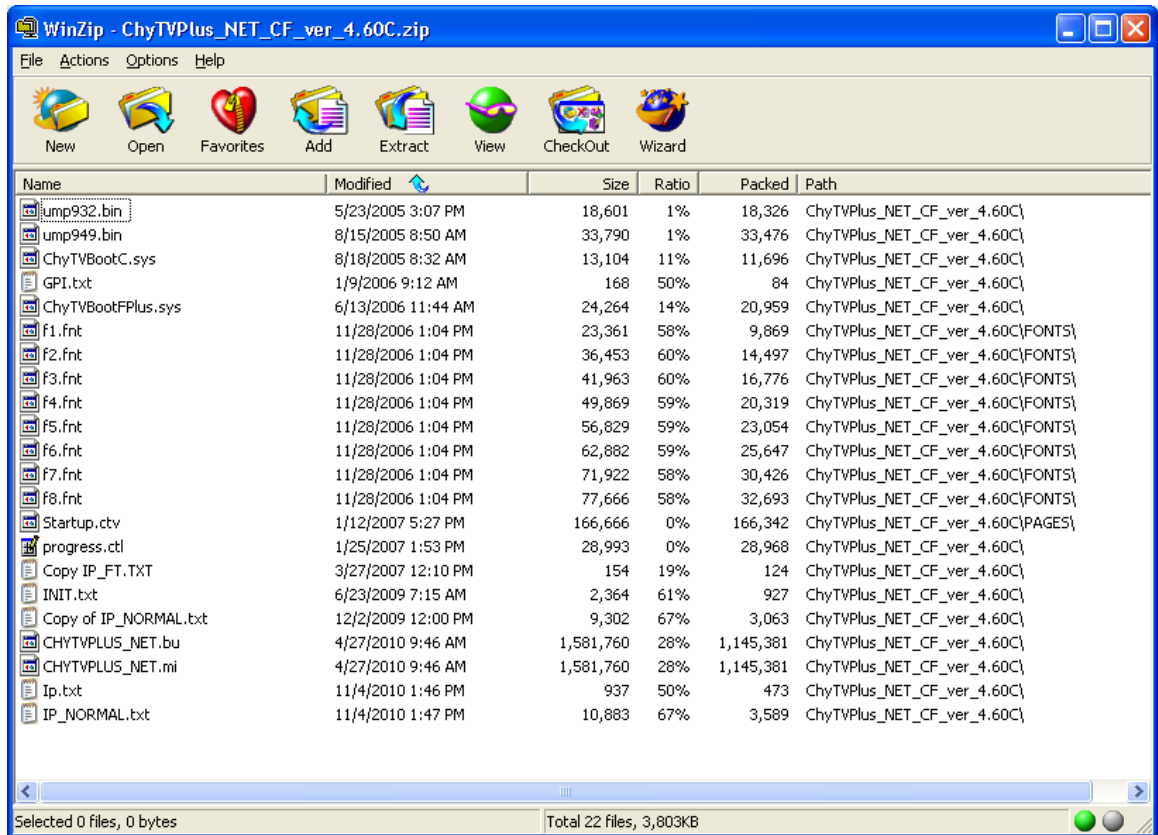
Download the appropriate OS and unzip it. It will extract into a named folder. Note that ChyTV-IP and ChyTV-IP2 use the same OS. See link below:

ChyTV Plus

http://www.chytv.com/software/mi/chytv_plus/ChyTVPlus_NET_CF_ver_4.60C.zip

ChyTV-IP

http://www.chytv.com/software/mi/chytv_plus/ChyTVIP_NET_CF_ver_4_11.zip



Copy the entire contents of the folder to a blank CF card. Do not copy the folder name itself; just the contents.

With ChyTV on the network, boot with the new CF card. Follow on screen instructions.

For HD Devices (HD 100, HD 150)

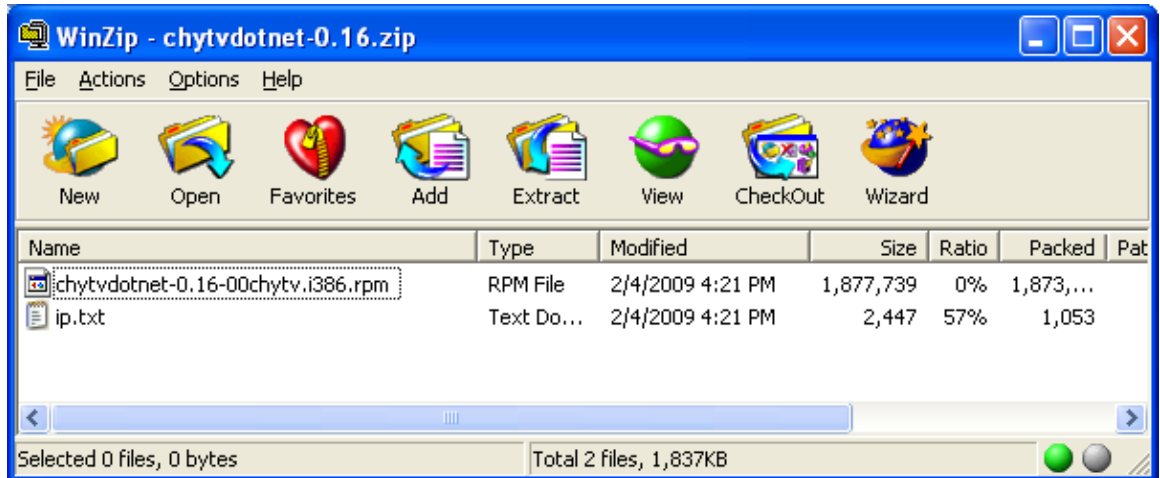
The file IP.TXT is used to control all system file updates. Updating a device's networking parameters such as IP address, DHCP settings and such are all controlled through IP.TXT, as are various system software updates. In general, to perform any software update, you will download a Zip file containing the software update and an appropriate IP.TXT. You will unzip these files to the thumb drive. Inserting the thumb drive into the device initiates the update.

Note that only a single software update should be performed in one 'session'. If multiple software updates are required, it may be tempting to edit IP.TXT to perform multiple simultaneous update with a single edit and insertion, however each update should be performed separately.

Select and download the appropriate update file for the HD 100 or HD 150.

Step 1: Loading the ChyTV.net 'cron' script.

Download the **HD 100 / 150 ChyTV.net** zip file and Unzip the file to a temporary folder or directly to the thumb drive.



If done to a temporary folder, copy the update file and IP.TXT to the thumb drive. Note that other files can exist on the thumb drive; it does not have to be 'clean'. The update procedure will only perform what it is told to in the IP.TXT file.

To modify the HD 100 / 150 software, please take the following steps:

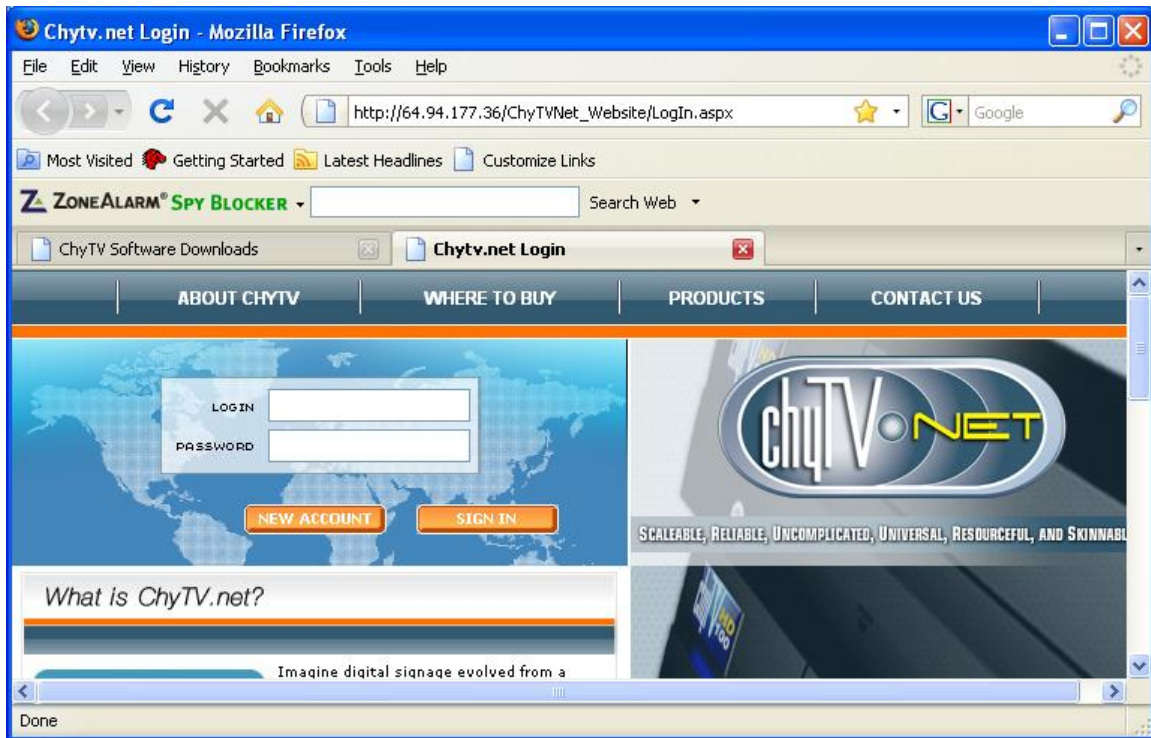
1. Using a Windows PC, insert the included "CHYTVHD100" USB thumb drive into an empty USB slot.
2. Copy the appropriate update file and IP.TXT to the thumb drive. Perform appropriate Eject procedure.
3. Power on HD 100 / 150. Wait for complete boot.
4. On the HD 100 / 150, insert the USB thumb drive into an empty USB slot.
5. Wait several seconds. The HD 100 / 150 will automatically perform the update.
6. Remove the USB thumb drive.

Step 2: Create a new account (once).

Go to :

http://167.206.202.156/ChyTVNet_Website/LogIn.aspx

and select Create New Account.



Note: The account name cannot contain underscores (letters and numbers only).

Once in, you will immediately be prompted for your MAC address. You should have this displayed on the video screen from step 1.

After registering your **FIRST** device, you'll get a new 'First Time' project delivered to the ChyTV.

Step 3: Uploading new projects.

To upload your projects into your ChyTV.net server account you need to use the Project Upload application below. This is temporary until we are able to build the functionality into ChyTV Tools. "Upload Project" from the ChyTV.net site itself will no longer be used. The benefits of this method are that a) it will be more reliable as it processes each file individually, and b) it will only upload the files that have changed since the last upload.

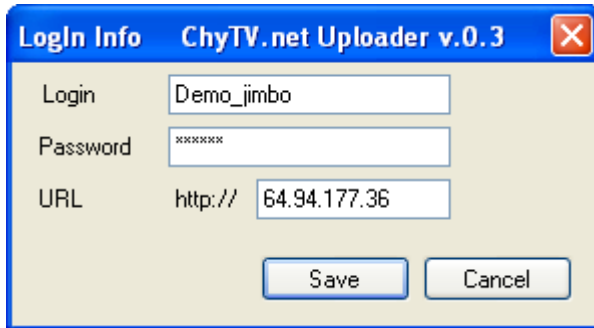
Go To:

<http://www.chytv.com/software/>

Download Project Uploader.

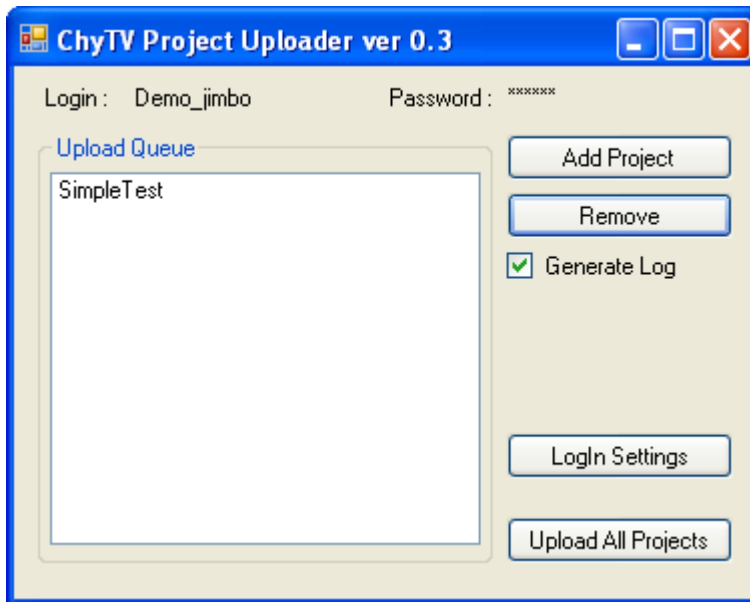
To use it:

1. Unzip it to an appropriate folder and run "ChyTV Project Uploader.exe".



Note: Be sure to use Colo IP address 167.206.202.156 rather than the default www.chytv.net.

2. Log in with your ChyTV.net account Name and Password.
3. Select "Add Project". Navigate to and select your desired project(s). This doesn't require a 'cpb' package of your project; you can just select the project's folder name. The project will then be added to the Upload Queue window.



4. Select "Upload All Projects". You do NOT need to check the check box next to your project. The check box is used to "Remove" projects from the queue. Your project will be uploaded to your ChyTV.net account.

Step 4: Creating Groups.

A group is a number of ChyTV devices (1 or more) that will be getting the same content (i.e. Project). A group can only have one project assigned. A project can be assigned to multiple groups.

To create a group and assign a project:

The screenshot shows the ChyTV.net Account groups view in Mozilla Firefox. The browser address bar shows the URL: http://64.94.177.36/ChyTVNet_Website/Groups.aspx. The page features a navigation menu with the following items: HOME, ABOUT CHYTV, WHERE TO BUY, PRODUCTS, CONTACT US. Below the navigation menu, there is a section titled 'Account Groups' with a table listing various groups. The table has columns for Group Name, Group Status, Project, Project Assigned, Devices, and View. Below the table, there is a section titled 'Add A New Group' with a form to enter new group information. The form includes a text input field for 'New Group Name' and a green 'Add New Group' button. At the bottom of the page, there is a footer with the text 'Copyright © 2008 Chyron, All rights reserved.' and logos for Chyron and ChyTV.

Group Name	Group Status	Project	Project Assigned	Devices	View
CHYTVHD	Active	Datacall_HD	2/26/2008 12:23:33 PM	3	
CHYTVHD100	Not active	PBT012808_T1	2/19/2008 10:21:06 AM	0	
HD100	Not active	OnTheBorder		2	
hd100test	Not active			0	
Minuk's beta group	Not active			0	
ocxDebug Group	Active	PHOENIX	2/26/2008 2:57:45 PM	1	
PP	Not active	BWW		0	
Sample Group	Active	PHOENIX	1/30/2009 10:29:35 AM	5	

1. Select **GROUPS**, use **Add New Group** to create a new group. Click the **View** magnifying glass icon to enter the group's menu.
2. Enter the MAC address of your device and give it a reference name of your choice and select **Add New Device**. The device cannot be part of another group or another account. Be sure to add the Time Zone. For Eastern Standard Time, use -05:00. For Pacific, use -08:00.
3. Select **Change Project** to select a project for the group. Note that it is scrollable. Select **Immediately** or **On** to enter an assignment date. Select **Save As** to assign the project to the group.

Note that the assigned project is listed at the bottom of the group window immediately indicating it is 'queued'. It may then take 15 or 30 seconds for the project to be assigned. When the assignment is complete, the group window will reflect the new project assignment.

The default 'update' interval is 15 minutes. Within 15 minutes, the ChyTV device should check in with the server and collect the new project. You can force it to collect the new project right away by cycling power.

In the Group windows, there are 3 different color coded rows
green - this device has been checking in regularly
red - this device has missed it's regularly scheduled check-in
yellow - this device has expired or has never checked in.