



## ChyTV HD multi-SDI Quick Start Guide

Rev. 8 12/7/17

Thank you for choosing our ChyTV HD multi-SDI graphics system. This Quick Start Guide is a supplement to the ChyTV User Guide, which can be found in the USB thumb drive **Manuals** folder. While most of the information in the current ChyTV User Guide is applicable to the ChyTV Plus, HD 100, HD 150, HD 250, HD BB, HD multi-SDI, HD Alert, and other ChyTV products, this Quick Start includes brief descriptions of HD multi-SDI specific information not included in the current User Guide. Note that the HD multi-SDI system is available in either a PC tower or a 3 RU redundant power supply rack-mount chassis.

Please contact ChyTV Customer Support with any questions at:  
**631-845-2092.**

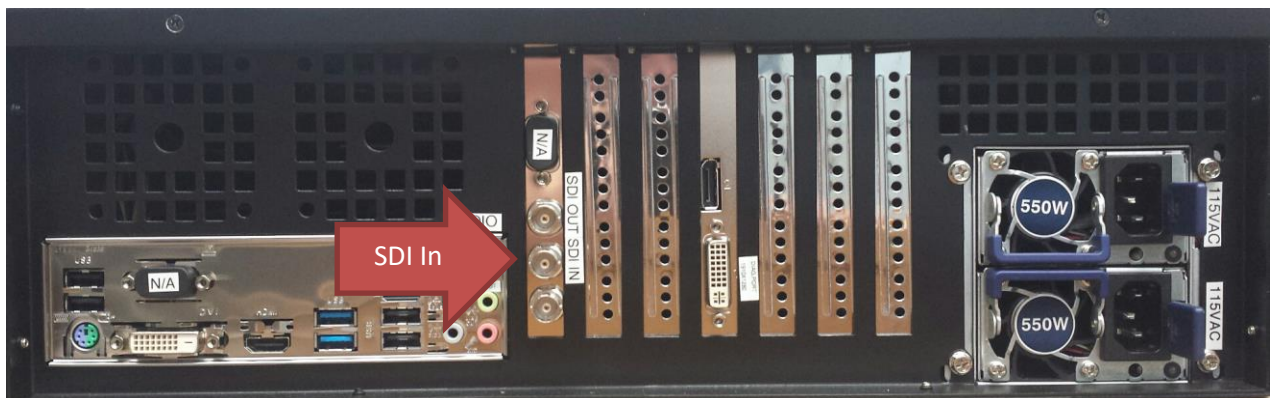


## Power Supply

Before operation, please check the ChyTV HD device's power supply voltage switch. The ChyTV HD device power supply is switchable between 110 volts and 220 volts. The switch is located on the rear of the device near the line cord receptacle. By default the ChyTV HD device may come set for 220 with a sticker covering it that says "Switch for 110". This is to protect the system from damage when shipped overseas. Plugging a 220 set device into 110 voltage will not function correctly, but will not damage components. Plugging a 110 device into 220 voltage will damage components.

## Turning On / Off

The ChyTV HD device operates simply by pressing the power button on the front panel. Note that there is also a power switch on the rear power supply labeled **0/1**. This must be pressed in on the **1** position. After pressing the front panel power button, the device may take about 90 seconds to boot. Occasionally it will run some internal diagnostics, so boot time may vary. It will immediately begin playing the default *Project*. Press the power button again to turn off. The device takes 20 seconds or so to shut down completely. Occasionally (every 30 drive mountings), some extra time booting will be required verify drive consistency. In this case, booting may take several minutes to complete.



**HD multi-SDI Rear View (Rack chassis shown)**

## Video Output

The DVI and HD-SDI outputs are simultaneously active. Note that the system by default is configured to be optimized for HD-SDI operation. Thus, during boot-up, all diagnostic and boot messages are suppressed so as not to be displayed “On Air”. Some diagnostics will be displayed on the DVI output, but will be suppressed upon completion of boot-up. It may take about 90 seconds or so for the system to boot and begin playing the current project. Also note that the factory output resolution is fixed at 1920x1080.

## Video Input

For HD-SDI input, the middle BNC connector is the active input. See diagram above.

## Audio In / Out

The green 1/8 audio jack is the audio output. The blue is the audio input. Think “green to the screen”. Input and output volumes can be set using the ***HD Configuration Manager*** utility.

## General Work Flow

Like all standard ChyTV devices, content is created, updated and managed using the ChyTV Tools interface. The ChyTV Tools software is run on a separate PC and connects to the ChyTV HD device via the network.

Alternately, content can be delivered across the Internet to the ChyTV HD device via the ChyTV.net web service. In this case, the content is still authored and managed off-line on a separate Windows PC. When completed, the project is packaged and uploaded to the ChyTV.net server's appropriate account and group. Complete ChyTV.net operations are described elsewhere. Contact ChyTV Customer Support for more information.

## Setting the IP Address

Before the ChyTV HD device can be connected to directly across the network from ChyTV Tools, it must be configured with a valid IP address. Since the ChyTV HD device is a stand-alone appliance, configuring custom parameters such as the IP address are achieved using the included USB thumb drive. By default, the ChyTV HD device leaves the factory set to DHCP for dynamic IP allocation. However, it can also be set to a static IP which will ensure consistent connections with ChyTV Tools going forward.

Upon boot-up, a gray informational screen is displayed for several seconds that shows the system's IP Address along with MAC Address, software version, screen resolution and other information. If the system is set for DHCP the IP address should be noted.

To modify the ChyTV HD device's network settings, please take the following steps:

1. Using a Windows PC, insert the included ChyTV HD device USB thumb drive into

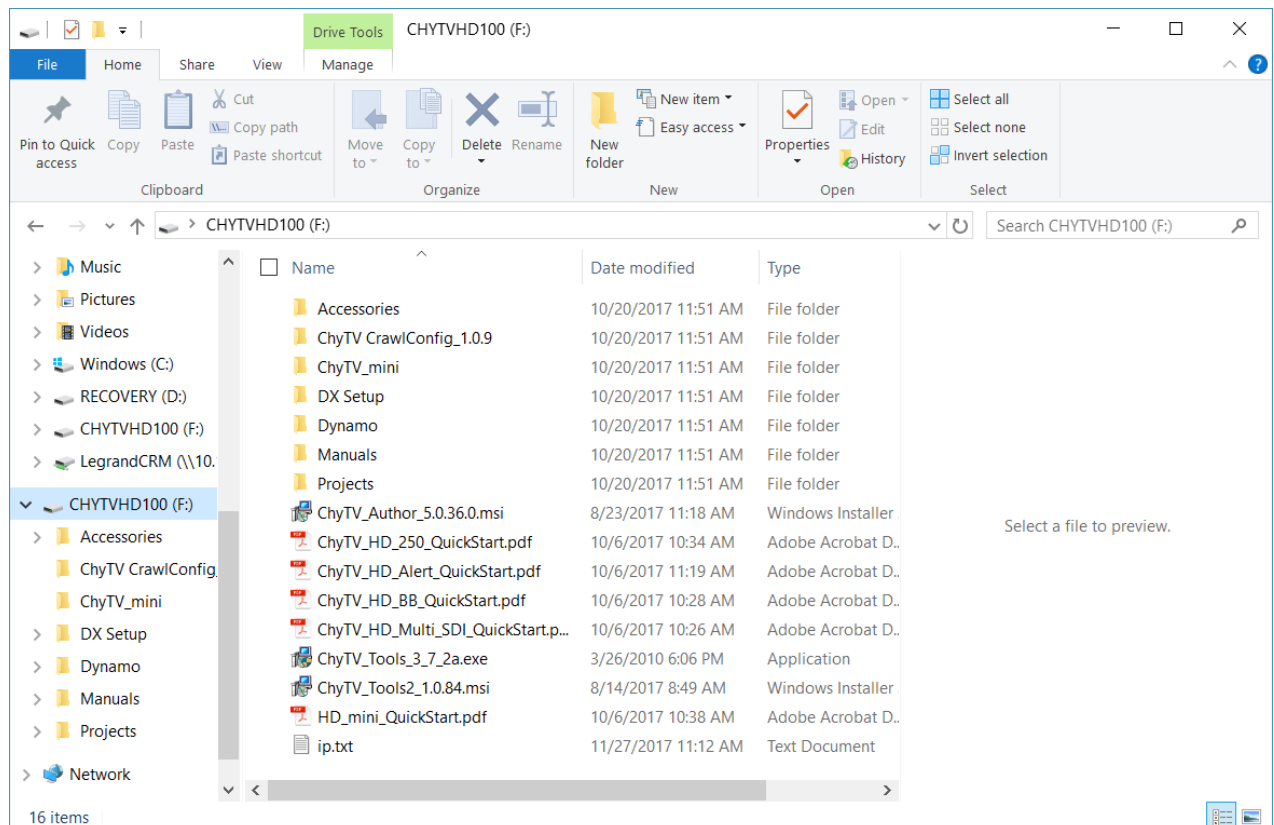
- an empty USB slot.
2. Using Notepad, open the file IP.TXT for editing.
3. Modify the above networking parameters to their appropriate settings. Note that in the IP.TXT file, a '#' symbol as the first character on a line indicates that the line is "commented out" (i.e. ignored).
4. Save IP.TXT file and properly stop and eject USB thumb drive.
5. Power on ChyTV HD device. Wait for complete boot.
6. On the ChyTV HD device, insert the USB thumb drive into an empty USB slot. Note that only USB 2.0 is currently supported. Therefore the best choice would be one of the USB slots on the rear panel next to the Ethernet port. The 'blue' USB 3.0 slots should not be used.
7. Wait approximately 20 seconds. The ChyTV HD device will automatically collect the new networking parameters from the IP.TXT file.
8. Remove the USB thumb drive and restart the ChyTV HD device by turning off and on again.

The new IP address can be confirmed by 'pinging' from a PC on the network.

## Installing the Software

The ChyTV management and creation applications can be found on the included USB thumb drive. The drive also includes several Sample Projects and utilities and can be used to initialize the ChyTV device IP address.

Opening the USB drive on a PC will show something like the following:



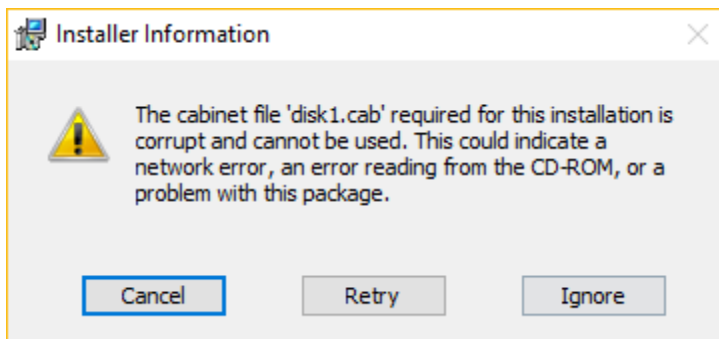
The same exact thumb drive image is used for all of our products. The CHYTVHD100

volume label is actually used as a 'precaution' for using the thumb drive for configuration updates. The IP.TXT file on the thumb drive can be modified for a variety of commands to the device, most commonly is to change the networking parameters. When a thumb drive is inserted in the device, it first checks for the CHYTVHD100 volume name, otherwise no action is taken.

The standard files to be installed are **ChyTV\_Author\_XXXX.msi** and **ChyTV\_Tools2\_XXXX.msi**. ChyTV CrawlConfig is only required for a ChyTV HD-Alert system and Dynamo is only for certain legacy purposes.

**Note:**

*Some versions of Windows may generate the error below if an "msi" installation script is executed directly from the USB drive.*



*If this error occurs, simply copy the "msi" files from the USB drive to a temporary folder on the PC and re-execute.*

## ChyTV Tools

Standard with all ChyTV products, ChyTV Tools is an extremely intuitive software utility to create, manage, schedule and distribute content for the ChyTV Video Graphics Information Display Systems. ChyTV Tools enables integration of dynamic graphic and text content with a variety of animations. All graphic pages can be individually controlled via a schedule that permits looping on duration or specific days of the week and time of day. For multiple device deployments, ChyTV Tools enables you to control many IP devices from a single location over the network. ChyTV Tools combines powerful graphic, video, and audio capabilities with an easy to use interface. Page layout and design are readily composed with the also include ChyTV Author WYSIWYG tool.

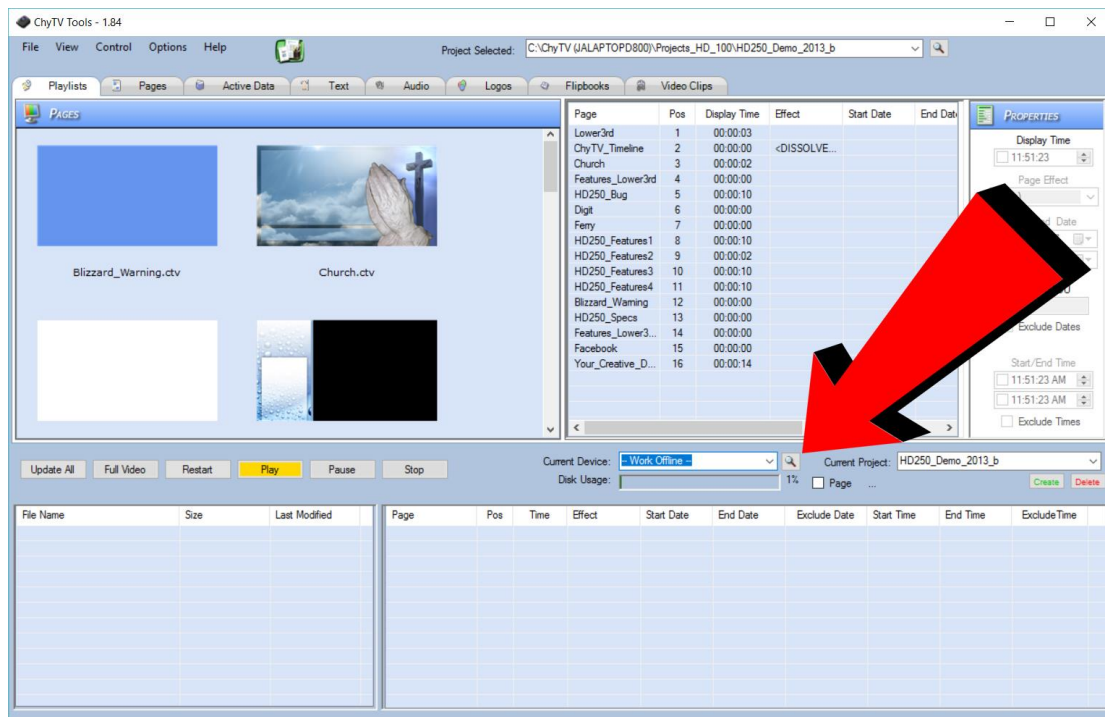
Having set the IP address on the ChyTV HD device, the device can be connected to via any Windows PC on the network using ChyTV Tools. A newer version of ChyTV Tools is available on the shipped USB drive and is called **ChyTV\_Tools2\_1.0.XXXX.msi**. At the time of this Quick Start's writing, the ChyTV User Guide still reflects the earlier version of ChyTV Tools (ver 3.7.2). The newer version is very similar and has number of enhancements, including improved compatibility with newer versions of Windows such as Windows 10. However there are some subtle differences. Later Versions will be available for download from [www.chytv.com/support](http://www.chytv.com/support).

To install ChyTV Tools, double-click the installation msi file:  
**ChyTV\_Tools2\_1.0.xxxx.msi.**

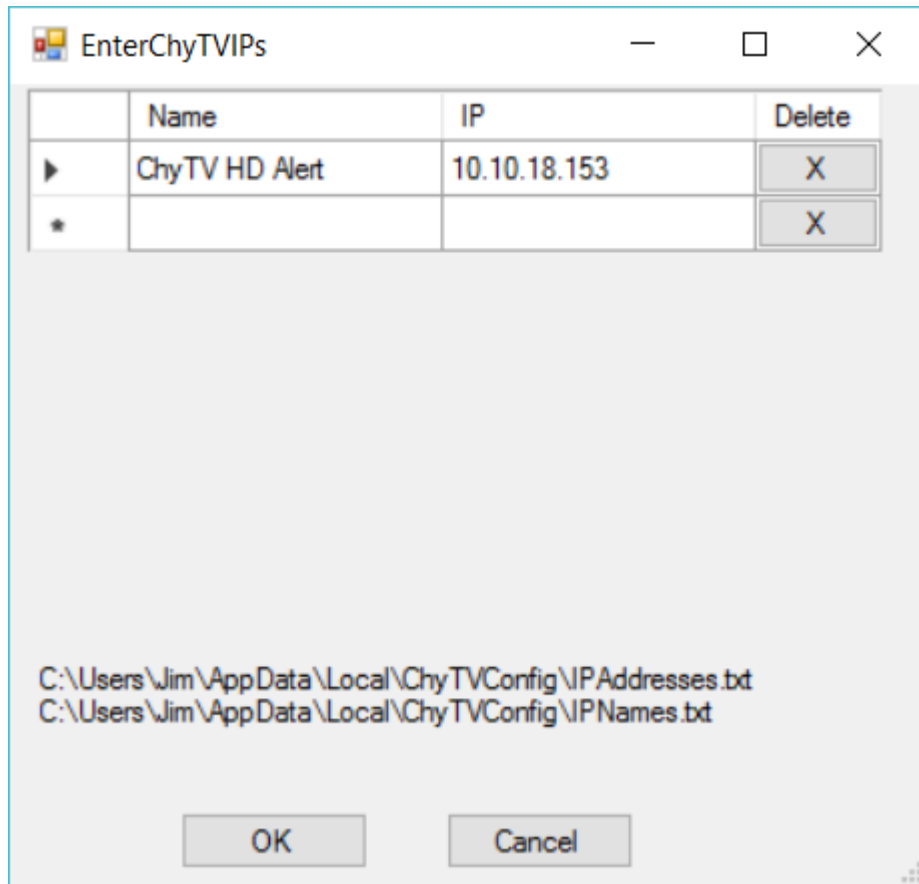
Please contact ChyTV customer support at 631-845-2092 for help and training.

### Configuring IP Addresses in ChyTV Tools

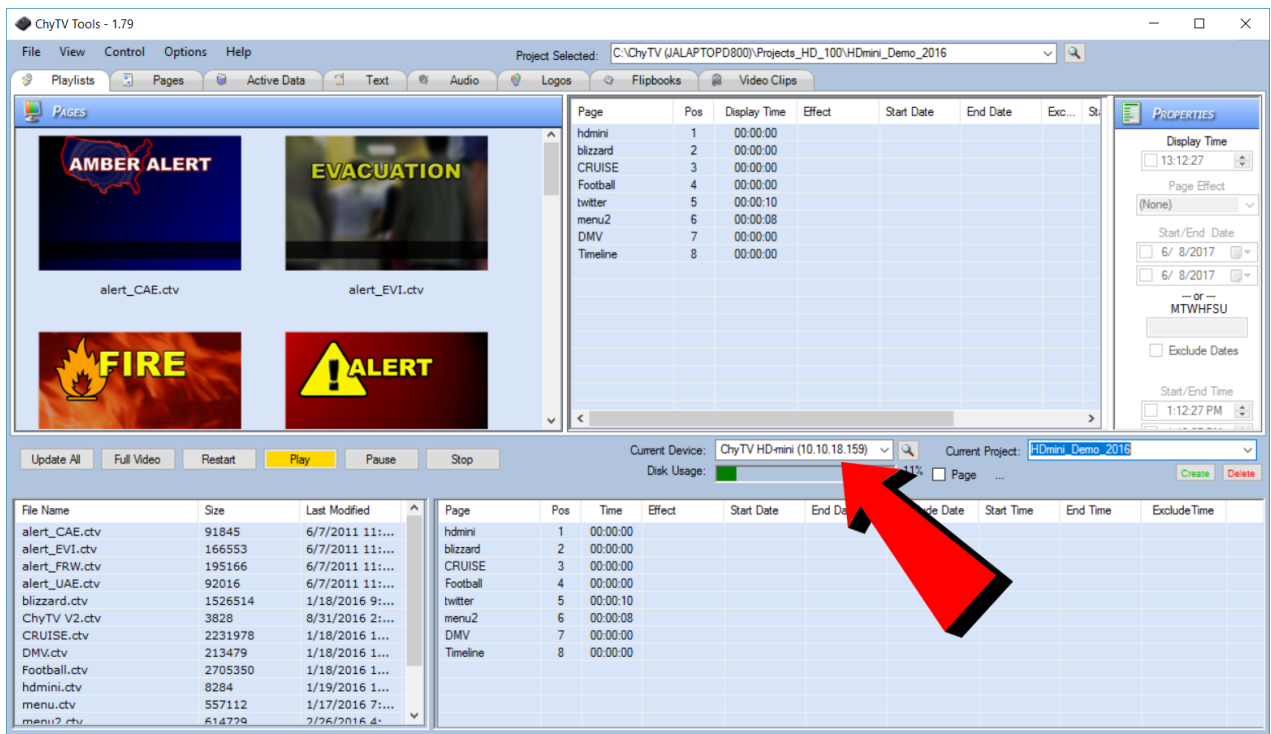
To connect to one or more ChyTV devices, the IP addresses must be configured in ChyTV Tools. To add IP Addresses, select the magnifying glass next to the Devices drop-down on the middle Tools menu bar. See image below:



Next give the device and name and enter its IP address. See image below:



The device can now be selected from the Device drop-down. See image below:

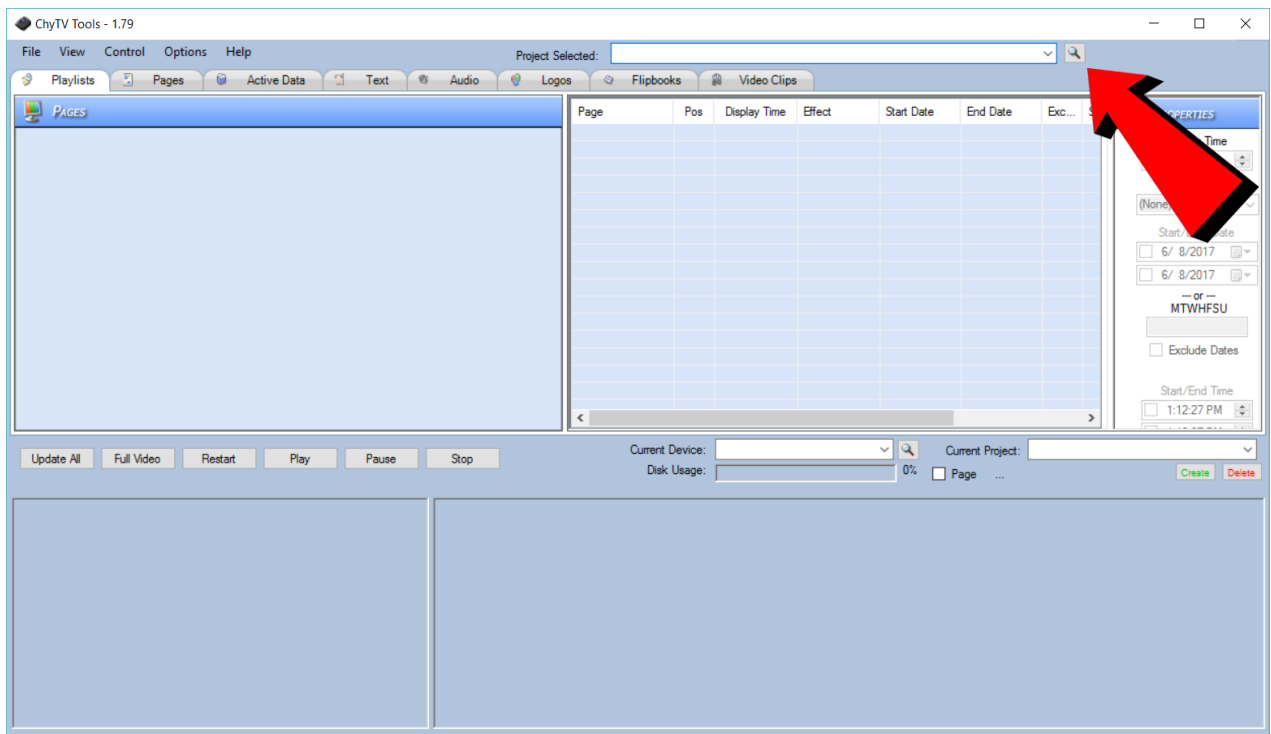


Note that alternate projects can be selected to be the current project from the **Current Project** dropdown.

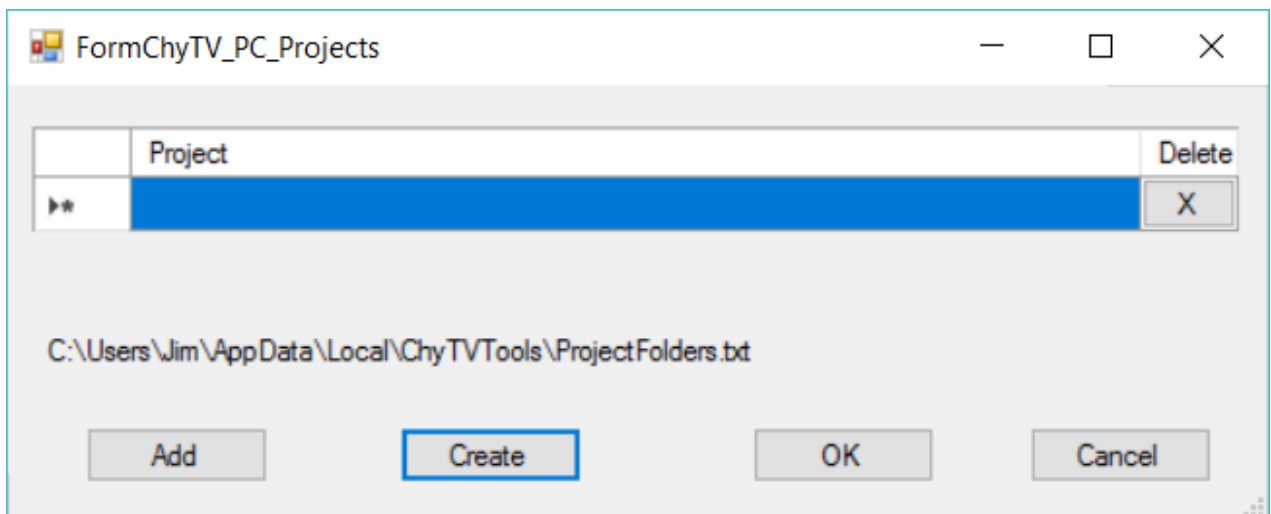
## Configuring Projects Using ChyTV Tools

A ChyTV **Project** is a folder that includes all content, assets and schedule information for playback. A project is resident on a PC and managed using ChyTV Tools. When appropriate, ChyTV Tools is used to transfer the project from the PC to the HD-mini device. Multiple projects can exist on the PC side as well as on the HD-mini device. However, there is always a concept of the **Current Project**. This is the schedule and content that the HD-mini is currently playing.

To Create a new project, or to add an existing one to the **Project Selected** list, click on the magnifying glass icon next to the Project Selected list drop-down box.



This will bring up the **Project Add / Create** box.

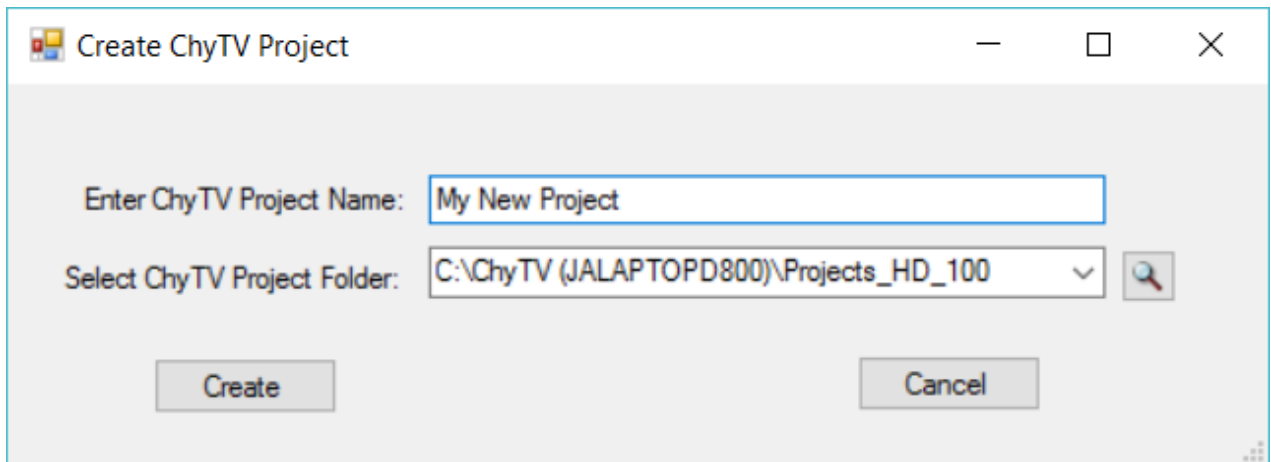


To select an existing project, select **Add** and navigate to the desired project. Note that there are several sample projects include under the **Projects** folder on the included USB drive. These can be copied to the PC hard-drive to a location of your choice. Typically, though not necessarily, the Projects reside under: **C:\Program Files (x86)\ChyTV\ChyTV Tools2\Projects**.

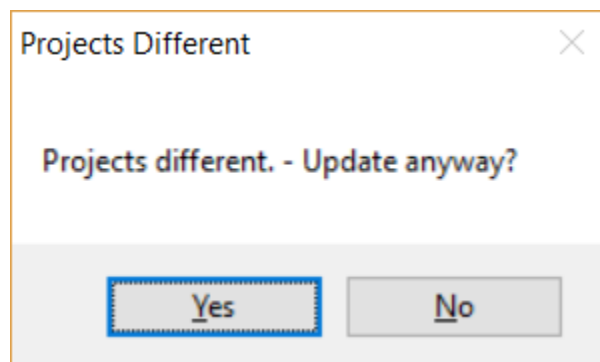
Our ChyTV devices do ship with several demos pre-installed that match the system's particular capabilities. However, there is no direct correlation between the thumb drive projects and the ones pre-installed on the system.

To Create a new project, select **Create**. Use the Magnifying Glass button to navigate to a location on the PC for your projects to go. As you develop new projects, you may want to keep them together in the same place. Different Projects will have their own unique name. Enter the new Project Name. In the example below, upon clicking Create, and new blank project called "My New Project" will be created under:

C:\ChyTV (JALAPTOPD800)\Projects\_HD\_100



The **Update All** button is used to transfer the currently selected project from the PC to the ChyTV device. Users will generally want their computer project (top half of Tools) to match the device project (bottom half of Tools). If there is any kind of mismatch in the two project names, Tools will generate the following warning.



This prevents content and the schedule from the computer project inadvertently overwriting the project on the device. What would typically be done is to click the green **Create** button below the device's **Current Project** drop-down. The user is then prompted to name the new project, but it is pre-loaded with the same name as the

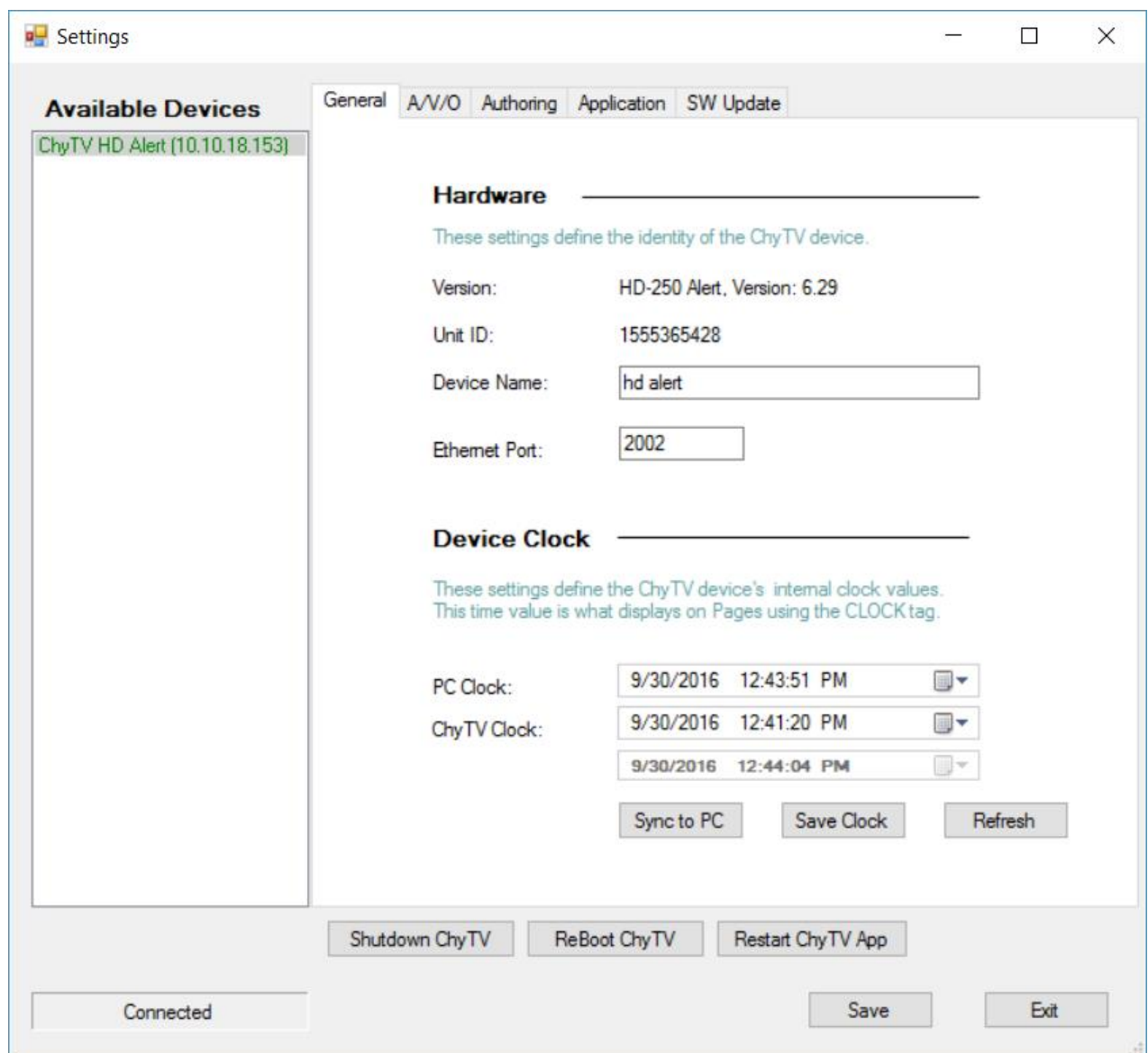
computer project. Selecting **OK** will create a new, blank project on the device that matches the computer project name. Then **Update All** will download all content and the projects will be 'synchronized'.

### ***Configuring the Hardware***

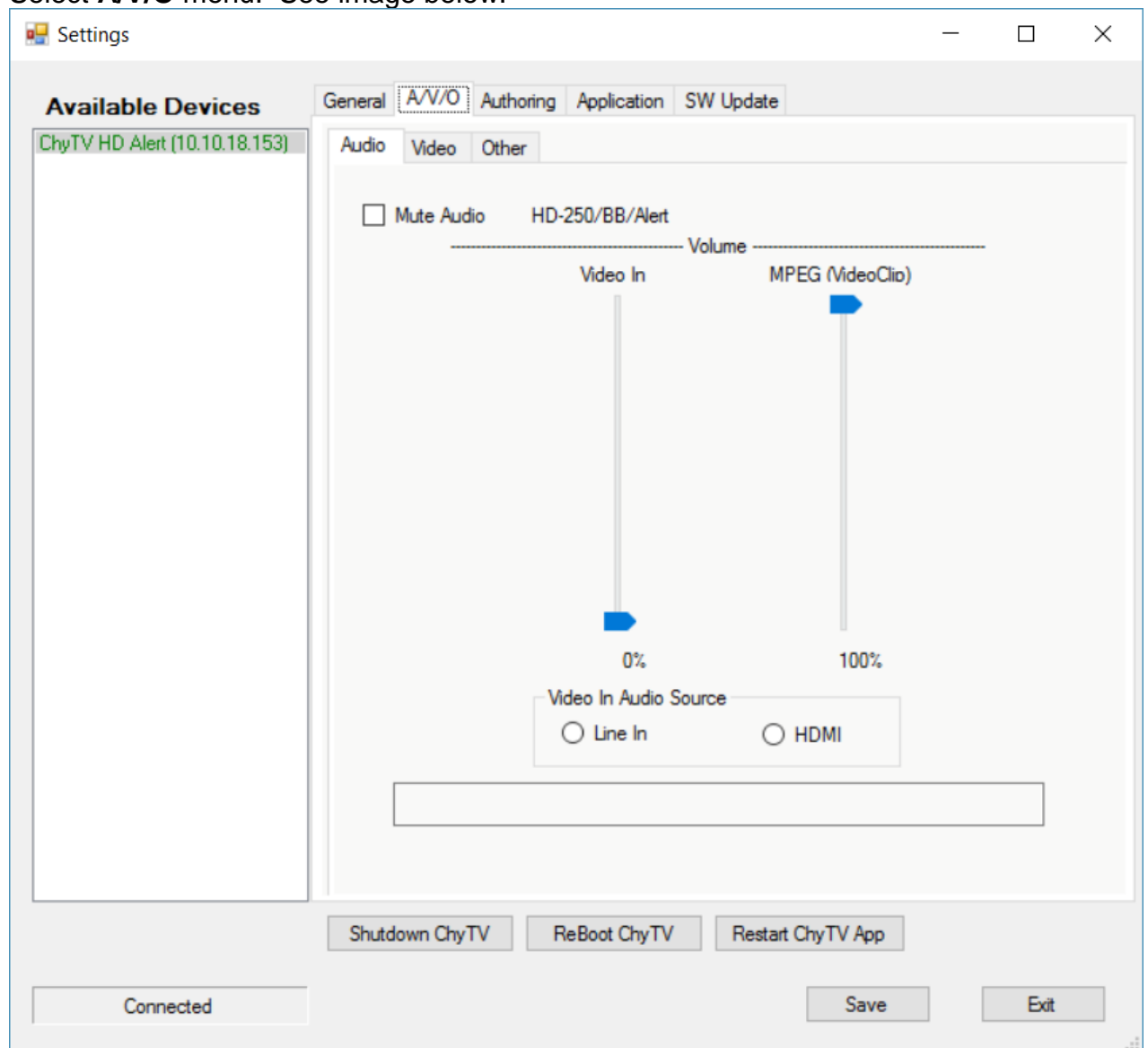
The Hardware Configuration Manager has been incorporated into ChyTV Tools. It is used to set a variety of system settings, including:

- Audio volume levels for Line In, Video Clip and Line Out.
- Video Settings for Input Source.
- Landscape or Portrait mode display.

To use the Hardware Configuration Manager select Options / Settings from the top menu bar in Tools. Then left click on the desired device. See image below:

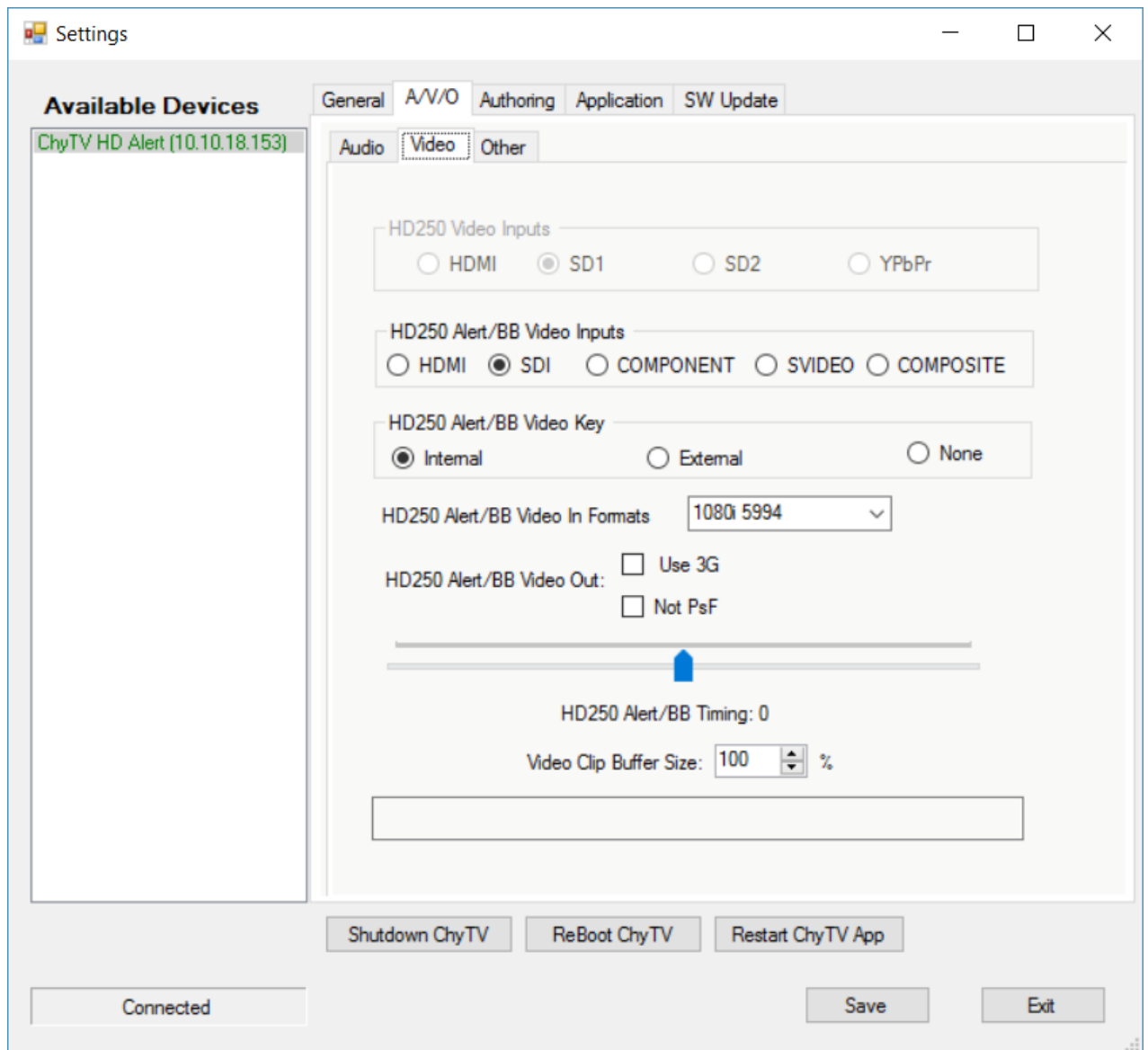


Select **A/V/O** menu. See image below:



To modify audio settings, modify the settings to desired values and press **Save** to send the settings to the ChyTV device. Select Restart ChyTV App to apply the settings.

To modify video settings, select the **Video** Tab and modify settings to desired values and press **Save** to send the settings to the ChyTV device. Select Restart ChyTV App to apply the settings. See image below:



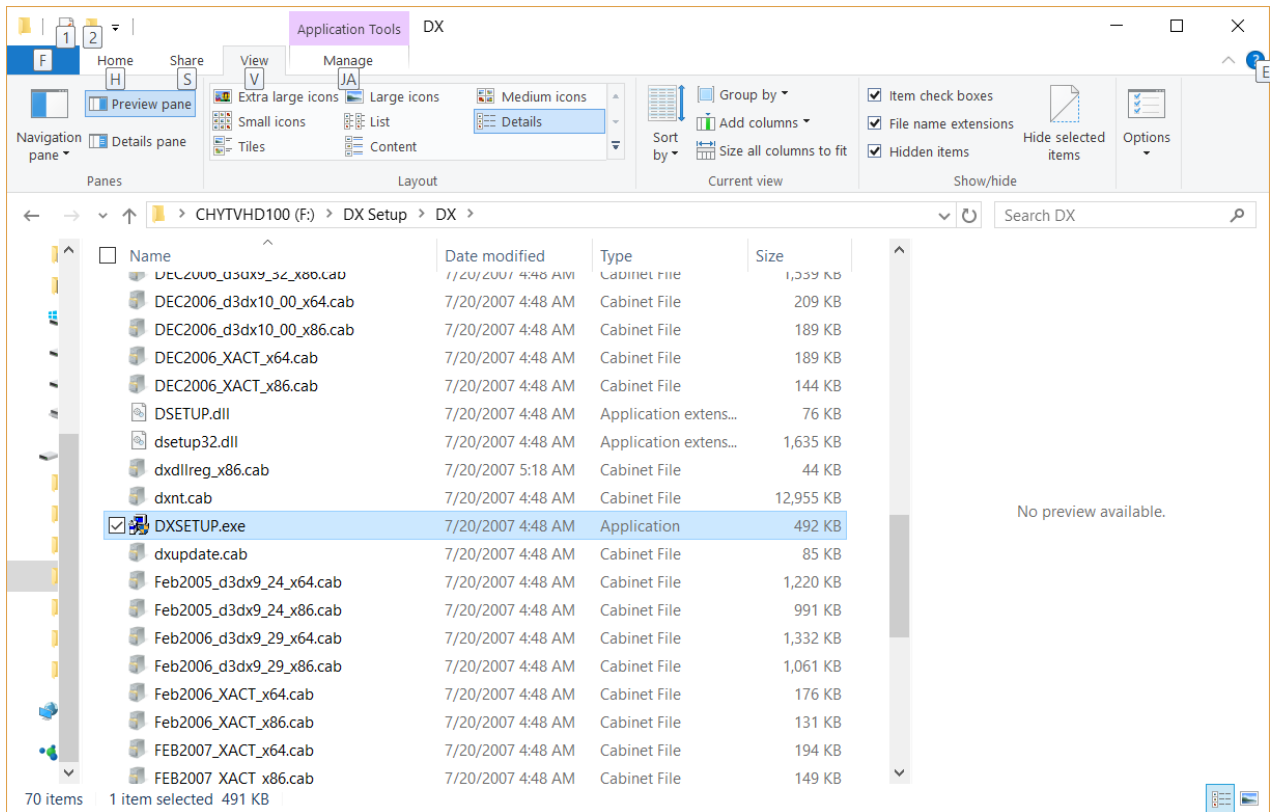
To modify other settings, select the **Other** Tab and modify settings to desired values and press **Save** to send the settings to the ChyTV device.

## Authoring Content

ChyTV Author is a WYSIWG authoring that works in conjunction with ChyTV Tools. Version **ChyTV\_Author\_5.0.34.0.msi** or later is included on the USB drive. Later Versions will be available for download from [www.chytv.com/support](http://www.chytv.com/support).

To install ChyTV Tools, double-click the installation msi file:  
**ChyTV\_Tools2\_1.0.xxxx.msi.**

ChyTV Author also requires version 9.03C of DirectX. This can be found on the USB drive in the **“DX Setup / DX”** folder. Navigate there and run the **“DXSETUP.exe”** application. See image below:



ChyTV Author is a WYSIWYG content authoring tool for creating ChyTV pages.

An alternative to ChyTV's PowerPoint based interface, ChyTV Author works hand in hand with ChyTV Tools project management software to create stunning content with sophisticated animations and crisp, dynamic text from any TrueType font. The ChyTV Author canvas can be configured in a variety of formats, including NTSC, PAL, HD 720 and HD 1080, all in 4 x 3 or 16 x 9 and landscape or portrait. ChyTV Author imports a wide variety of graphic, animation and video clip formats, including jpg, png, tif, tga, bmp, mpg, mov, quick-time and more.