



## High-Definition Dynamic Digital Signage System with HD Video Squeeze, HD Clip Playback, and layered 3D Graphics

THE CHYTV GROUP



### Features

- Live HD Input, both windowed or full-screen overlaid. Various HD video formats.
- Layered page elements include live video, clips, text, graphics and backgrounds
- Full-screen HD clips as animated backgrounds overlaid with dynamic text and graphics.
- Dynamic real-time 3D Text and Graphics
- Landscape and Portrait display modes
- Squeeze and position live video and clip player windows, including dynamic transitions
- Dynamic broadcast quality effects such as text pushes, fades and crawls
- Animated Text, Graphics and Logos using GIF, TGA, MPEG and more
- Multiple text and graphic zones may be independently sized and positioned
- Page scheduling, including looping durations or specific day, date and time control
- External data interfaces for real-time data updates such as news, sports, stock and weather
- Interfaces with a variety of peripheral devices including RFID, touch screen, contact closure switches, serial control and more.

### Live HD Video Input ... Customized

The ChyTV HD 250 extends the popular ChyTV HD 100 and HD 150 product line to include High-Definition Live Video Input along with the familiar ChyTV features. Like all ChyTV products, the HD 250 gives you full control over each element on the page. But with the HD 250, you can take in virtually any flavor of live HD input and squeeze and position it within your content *uniquely* from page to page. You can have a full motion HD clip as a background with layered graphics, text and animations on top, along with a live HD video window of any size and position, or a variety of other arrangements. Ideal for any large-size digital signage, ChyTV HD 250 utilizes the same ChyTV Tools utilities to manage the projects and is completely compatible with existing ChyTV units. Like all ChyTV products, the HD 250 features the highest quality dynamic text and effects, even in Portrait display mode.

### Text and Graphics Image Engine

The ChyTV HD 250 features an internal MPEG clip player and has the ability to manipulate the video clip either in a window that is surrounded by graphics and text or to superimpose the message over the video background. In addition, full screen graphics can be displayed with dynamic text, logos and animations. A versatile play-list scheduler allows for dynamic programming. The supplied ChyTV Tools user interface allows for direct control of the ChyTV HD 250, or multiple ChyTV HD 250's can be added to the ChyTV.net server for automatic remote content updates.

### Easy Integration

The ChyTV system is easy to configure in a display system or integrated into an existing HD video infrastructure. The graphic and text information coupled with programmable audio clips may be displayed on a single TV screen or broadcast throughout the facility.

### Flexible and Reliable

Standard format animations can be imported from various file types such as MPEG clips, GIF, AVI, TGA sequences, etc. All graphic pages can then be scheduled from a simple, intuitive scheduling interface for either automatic looping or date/time playback. This self-contained device is virtually virus-proof, requires no external computer connection and ensures utmost reliability and ease of use.



## Technical Specifications

### Video Outputs

*Outputs not available simultaneously.*

Digital:

HD HDMI  
HD DVI-I

Analog:

HD WXVGA  
(More coming)

### Video Inputs

Digital:

3G/HD/SD SDI, SMPTE-259/292/296/424  
HDMI v1.3, 30 bits/pixel, RGB or YUV,  
2.25Gbps, SD, HD, 1080p50/60

Analog:

Composite/S-Video (Y/C): NTSC, NTSCJ, PAL 12-bit  
A/D

SD Component: SMPTE/EBU N10, Betacam 525 line,  
Betacam 525J,  
HD Component: YPbPr 12-bit A/D

### Video Formats

525, 625, 720p, 1080i, 1080p, 1080psf

### Audio Outputs

Number of Outputs 1 1/8 mini stereo  
1 SPDIF  
1 Line-out  
Number of Inputs 1 Line-in  
1 MIC  
Format low impedance,  
unbalanced stereo

### Interfaces

USB USB 2.0  
Ethernet 10/100/1000 BaseT (RJ-45)

### Weight

15.5 lbs

### Dimensions

H x W x D  
387 x 175 x 356 (mm)  
15.25" x 6.9" x 14.0"

### Power Supply:

ATX12V 585W

### Models

ChyTV-HD250

### Part #

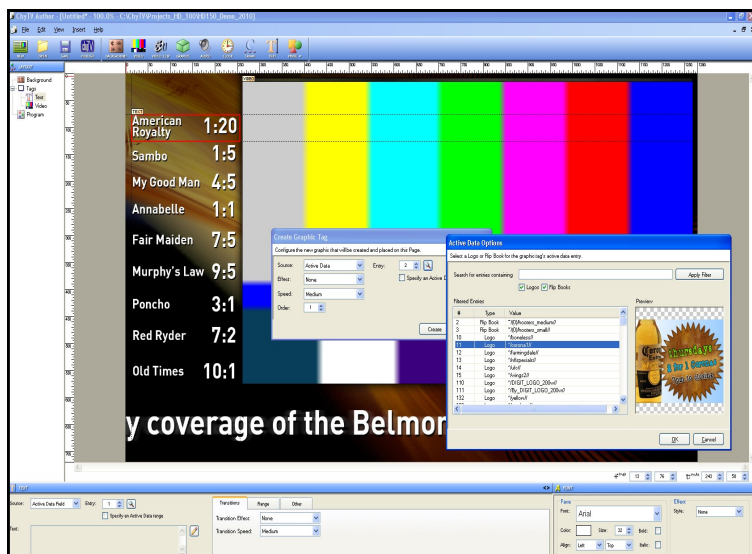
7A00350

### Software

- ChyTV Author** – WYSIWYG content authoring and management tool. Supports the following formats:  
*Fonts:* Any TrueType and OpenType  
*Images:* PNG, JPG, GIF, TIFF, TGA, BMP  
*Video:* MPG2, MPG4, MOV, AVI, QuickTime
- ChyTV Tools** – User interface for control and content management
- ChyTV Elements** – Page Creation and Template Add-in for PowerPoint (included)
- ChyTV Dynamo** – Animation and Image conversion tool



ChyTV HD 250



ChyTV Author Editing Interface

Web:

[www.ChyTV.com](http://www.ChyTV.com)

Email:

[sales@chytv.net](mailto:sales@chytv.net)

Phone

631 845 3880